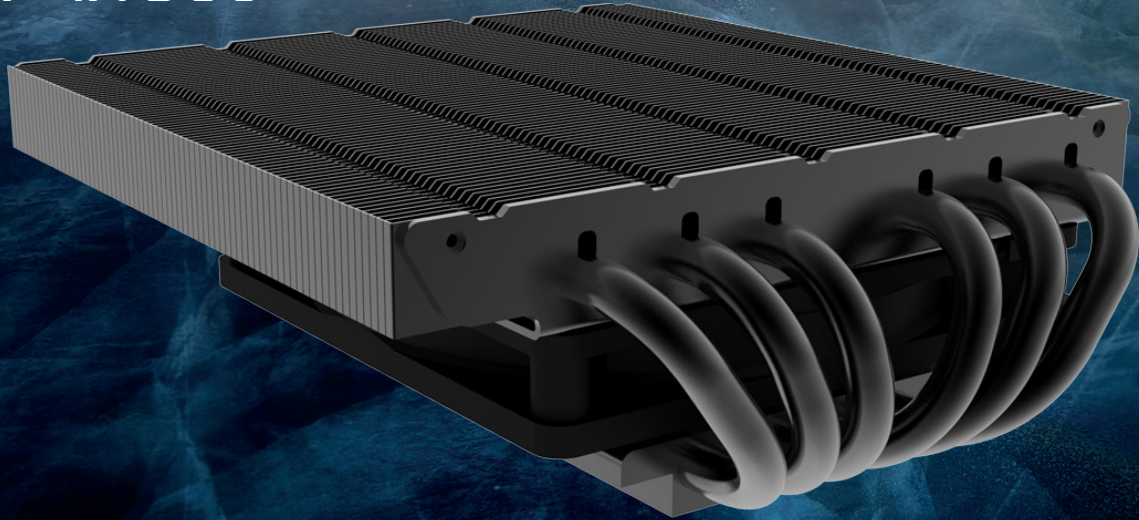


BR

BLACK RIDGE

Alpenföhn

low-profile cooler
in cooperation with DAN Cases

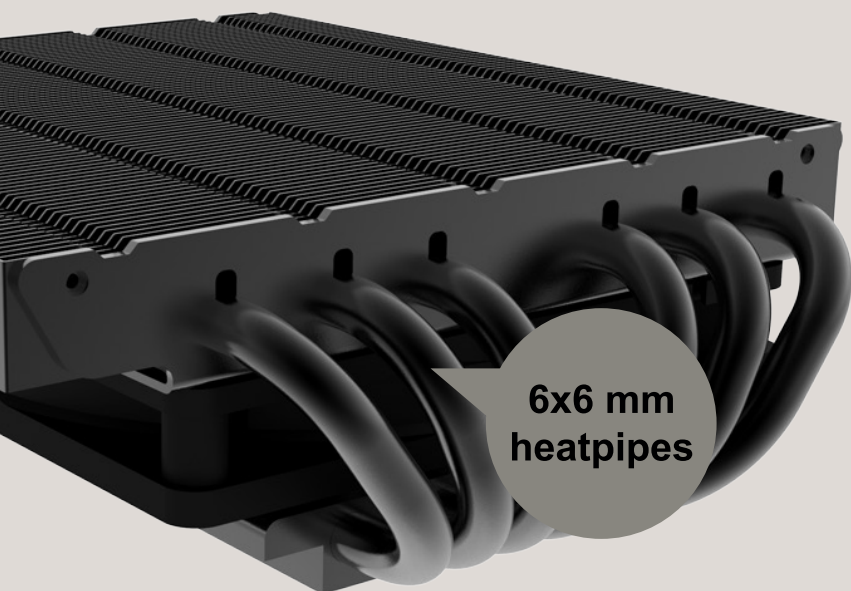


Black nickel plated, 6x6mm heatpipes, large heatsink, and a design that supports up to 33mm of maximum memory height - Black Ridge delivers pure performance in a minimum of space.

92mm PWM fan

For the necessary airflow, the included 92mm PWM fan is mounted on the bottom of the heat sink. This not only reduces the dimensions in small systems, but also achieves a maximum height of just 47mm.

92mm PWM fan



6x6 mm heatpipes

High-end heatpipes

6 heatpipes quickly and efficiently transfer the heat to the soldered aluminum fins of the heatsink.

Compatibility

Socket LGA 1151

Socket LGA 1150

Socket LGA 1155

Socket LGA 1156

Socket LGA 1200

Socket LGA 1700

Socket LGA AM4

Socket LGA AM3(+)

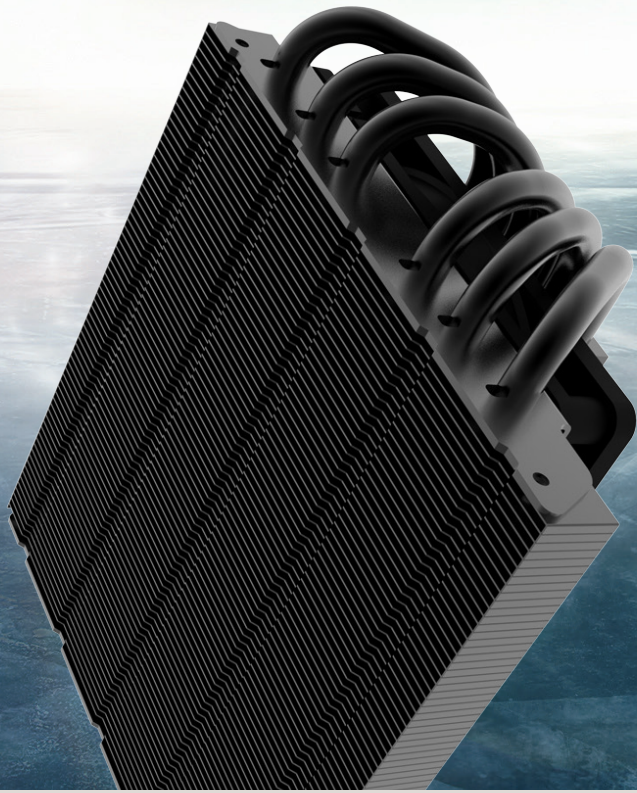
Socket LGA AM3

Socket LGA AM2(+)

Socket LGA AM2

Socket LGA FM1



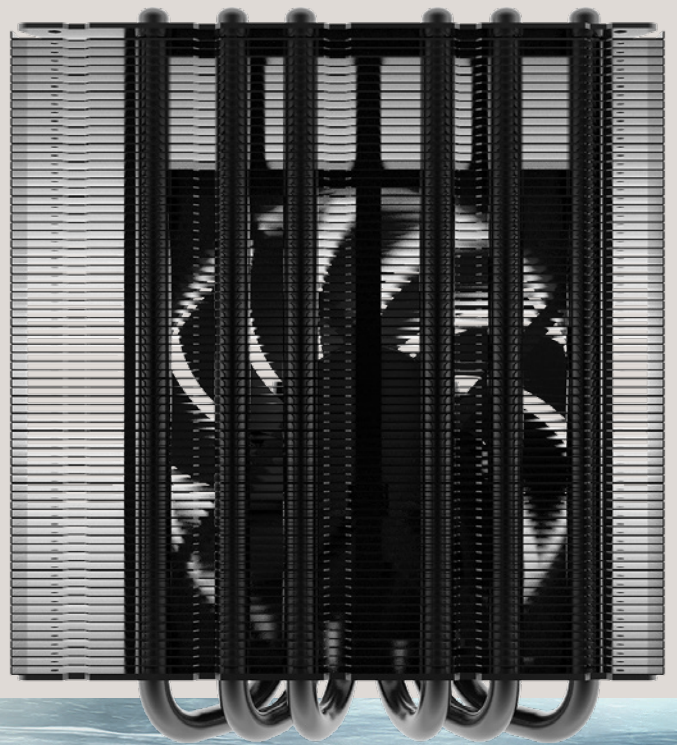


Heatsink specifications

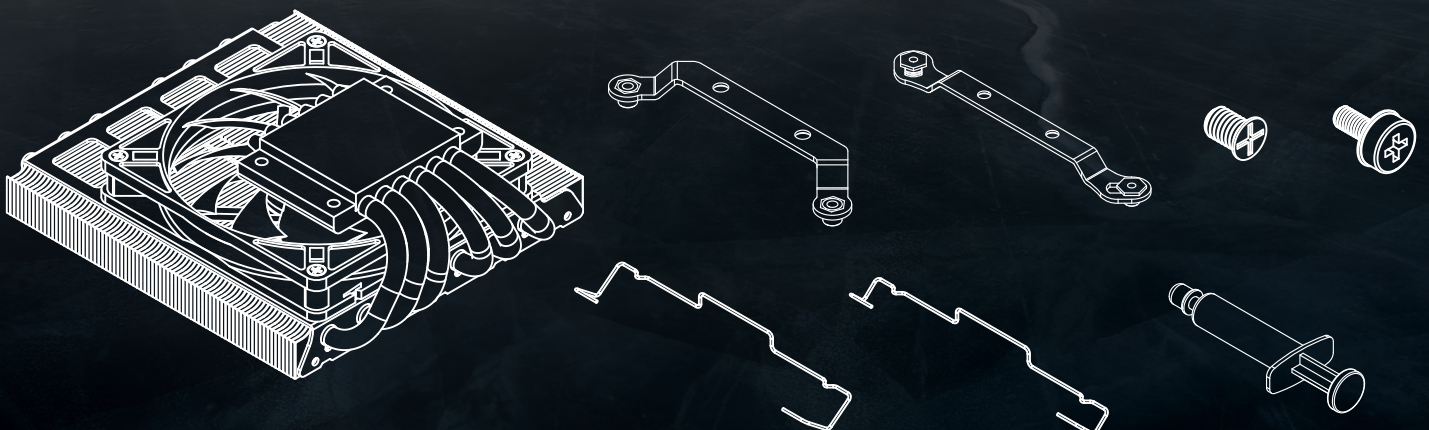
Product name:	Black Ridge
Dimensions:	140 x 120 x 47 mm
Thermal power:	95W TDP
Fins:	Aluminum
Baseplate:	Copper
Heatpipes:	6 x 6 mm Heatpipes
Weight:	ca. 407 g (incl. fan)

Fan Specifications

Dimensions:	92 x 92 x 15 mm
Speed:	800 - 2800 rpm
Bearing:	Hydraulic Bearing
Rated Voltage:	12 VDC
Airflow:	80,03 m ³ /h
Noise level:	14 - 37,6 dB(A)
PWM:	Yes

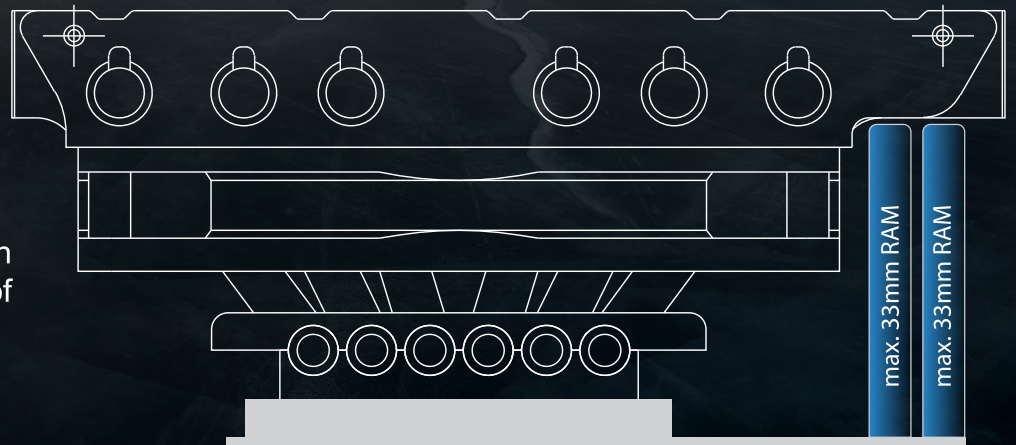


Full-featured accessories



RAM compatibility

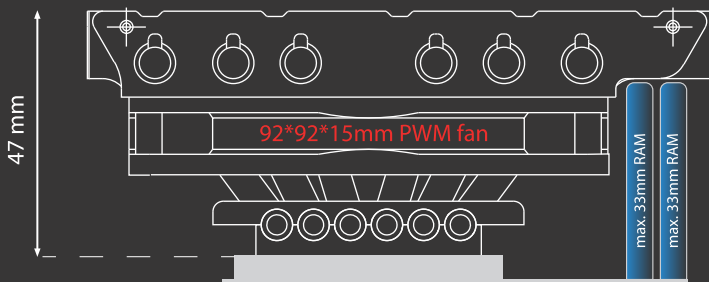
Large heatsink and a design that supports up to 33mm of maximum memory height.



Performance & Overclocking

Various fan mounts can increase the performance of the cooler even more. Mounting a larger 120x120x12/15mm fan on the bottom of the heat sink is possible. And the installation of a 120x120x25mm fan on the top of the heat sink offers the highest performance.

Compatibility Mode (1x92*92*15mm PWM Lüfter)



Performance Mode (1x120*120*12/15mm PWM Lüfter)



Overclocking Mode (1x120*120*25mm PWM Lüfter)

